

## Product Installation Guidelines & Scope of Use

Version 1, 3 July 2025, Page 1 of 7  
Document No.: 001.00.40.12

# CliniLever® Hospital Single Lever Shower Mixer

## PRODUCT CODE:

-TM-SHWCP

-TM-SHWCPR

-TM-SHWCPY

-TM-SHWCPD (with disabled lever)



## SPECIFICATIONS

- Chrome plated brass construction
- Clean hygienic design
- Low maintenance and easy to operate
- Smooth round designs to facilitate easy cleaning and help reduce dirt and bacteria growth.

**IMPORTANT:** All CliniLever® Taps are tested in accordance with AS 3718 and leave our premises in good working order.

**WARNINGS:** Special attentions to be paid on notes, photos, images, or drawings of assembly steps marked with the warning symbol.

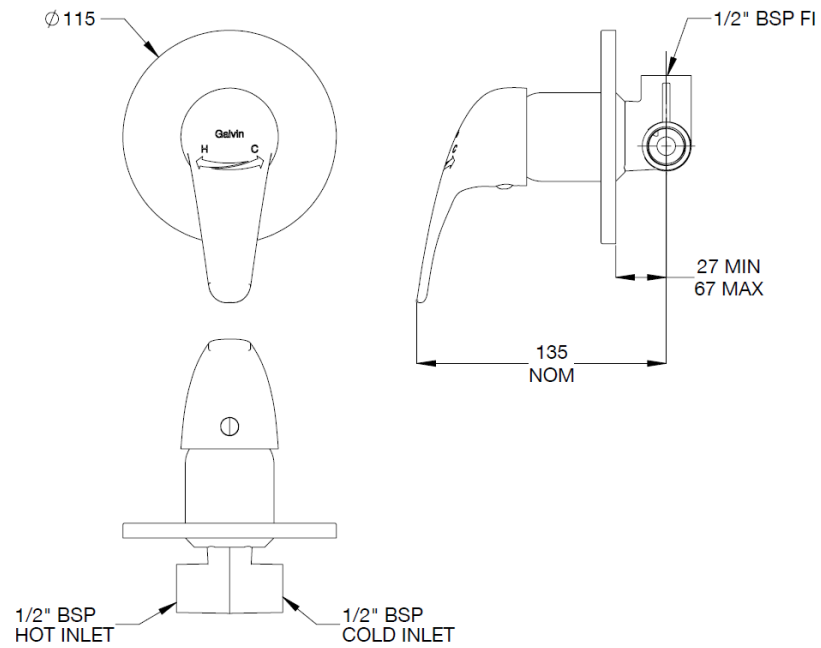


## TECHNICAL DATA

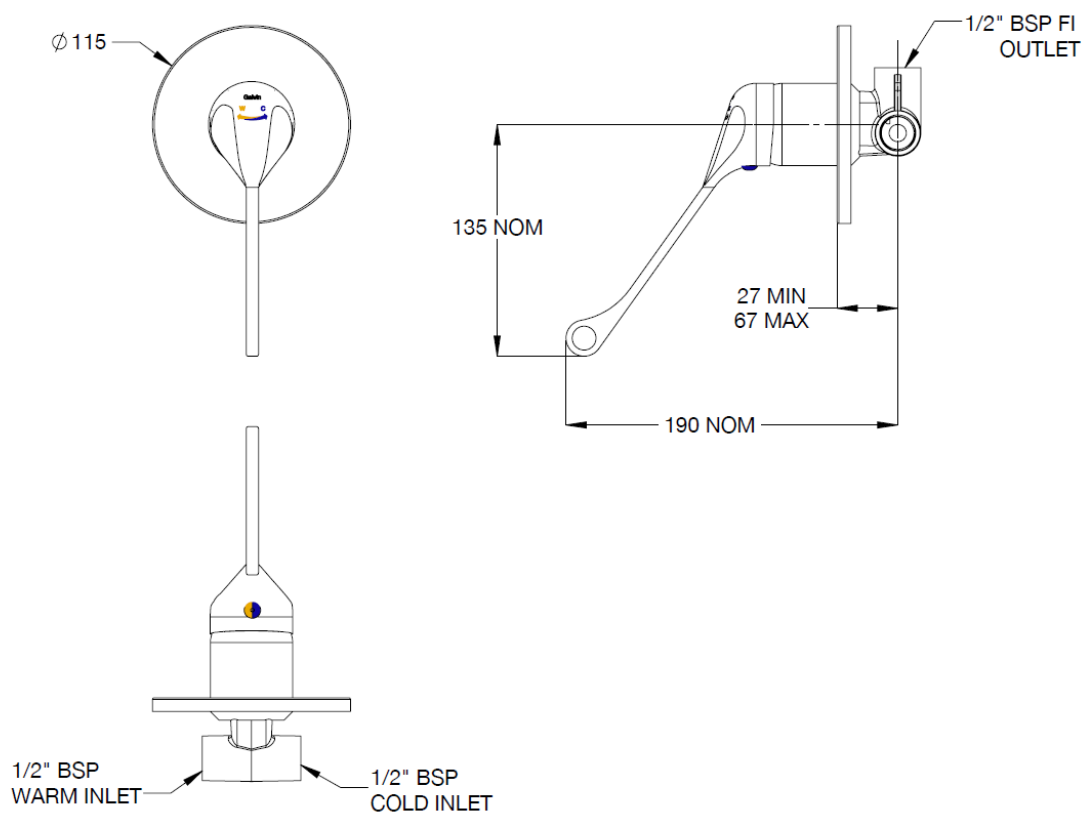
Inlet	½" BSP – Female	
Outlet	N/A	
Headwork	Ceramic Cartridge	
Working Pressure Range (kPa)	Min	150
	Max	500
Working Temperature Range (°C)	Min	10
	Max	80
Nominal Flow Rate (LPM)	N/A	
Construction	DZR Brass	
Finish	Chrome	

**NOTE:** Galvin Engineering continually strive to improve their products. Specifications may change without notice.

## DIMENSIONS



**TM-SHWCP/TM-SHWCPR/TM-SHWCPY**



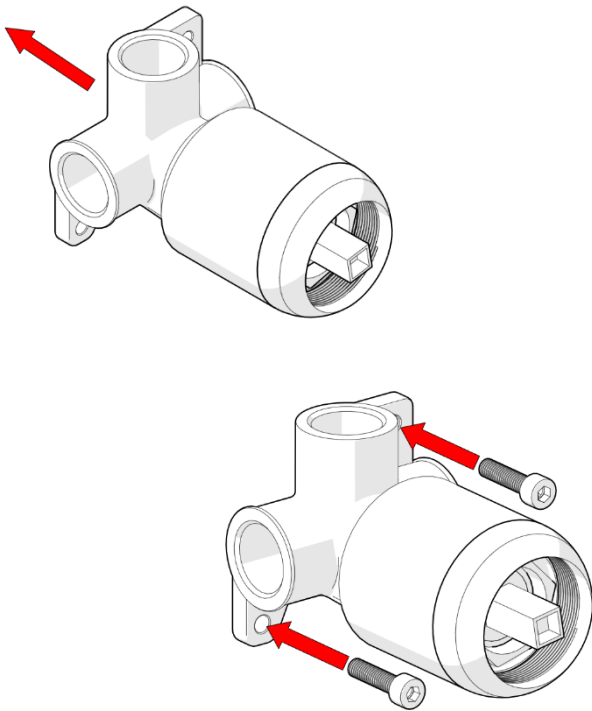
**TM-SHWCPD**

## PRE-INSTALLATION

- All pipework must be thoroughly flushed prior to installation, as foreign materials may block the flow regulating device and reduce the flow of water.
- Do not braze directly onto the mixer, as excessive heat will cause permanent damage, to the body and cartridge.
- Mixer body must be installed square to wall/tile face, to ensure cover plate sits flush.

## INSTALLATION

**INSTALLATION COMPLIANCE:** Galvin Engineering products must be installed in accordance with these installation instructions and in accordance with AS/NZS 3500, the PCA and your local regulatory requirements. Water and/or electrical supply conditions must also comply to the applicable national and/or state standards. Failing to comply with these provisions shall void the product warranty and may affect the performance of the product.

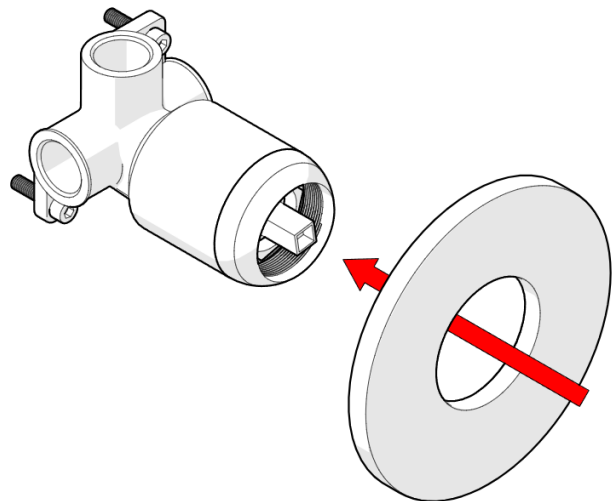


### 1. Fit Mixer Body

- Fit mixer body onto a suitable mounting plate or noggin in the wall.
- Secure using screws through hole in its base.

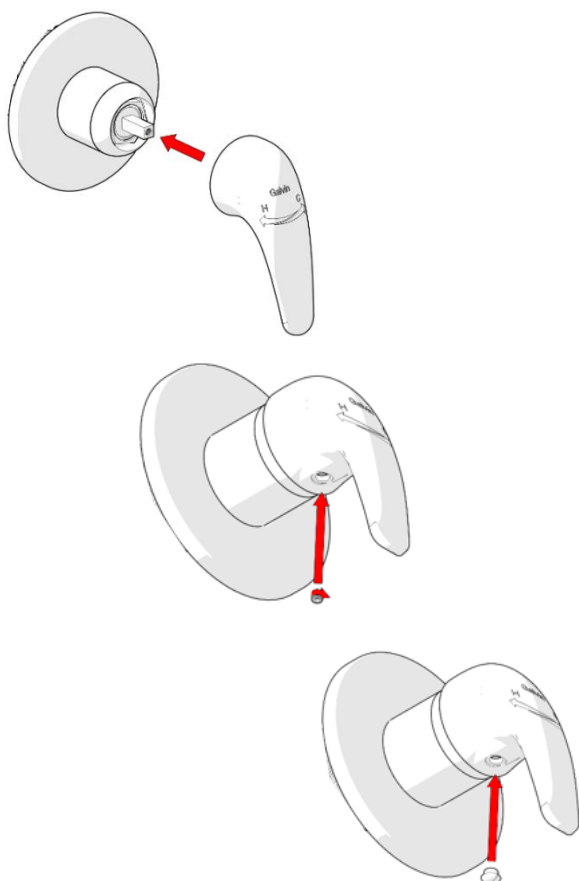
**⚠ Note:** When facing the mixer, the connections should be as follows:

Hot water inlet connection 'H' to the left.  
Cold water inlet connection 'C' to the right.  
Mixed water outlet connection vertically upwards.  
Check all connections for leaks.



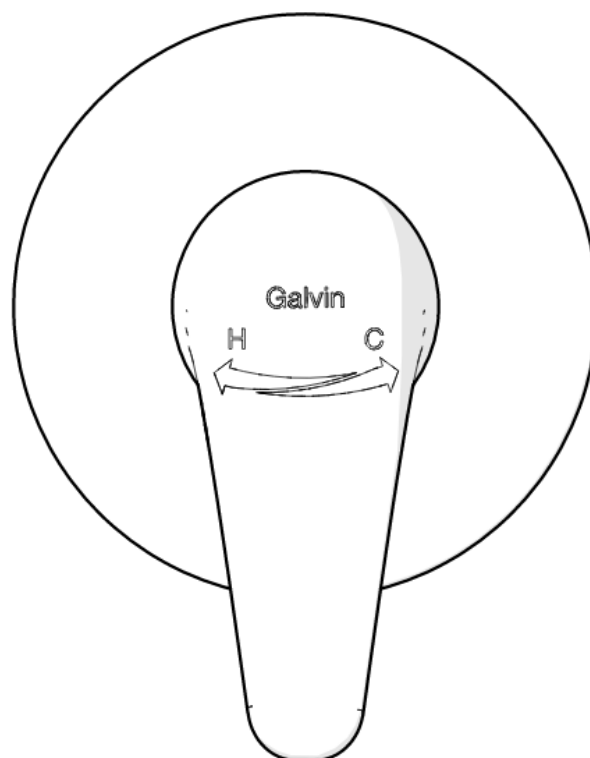
### 2. Fit Cover Plate

- Fit cover plate. Seal the faceplate to the wall using a suitable sealant.



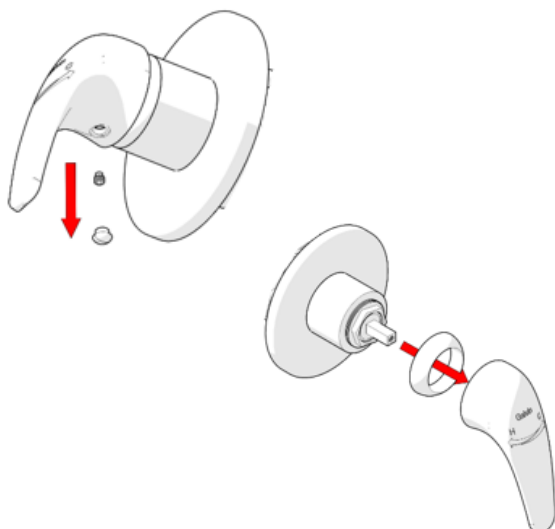
### 3. Fit Handle

- Fit the handle taking care that it is pushed fully down.
- Tighten screw using the 2.5mm allen key.
- Fit indicator plug red to the left.

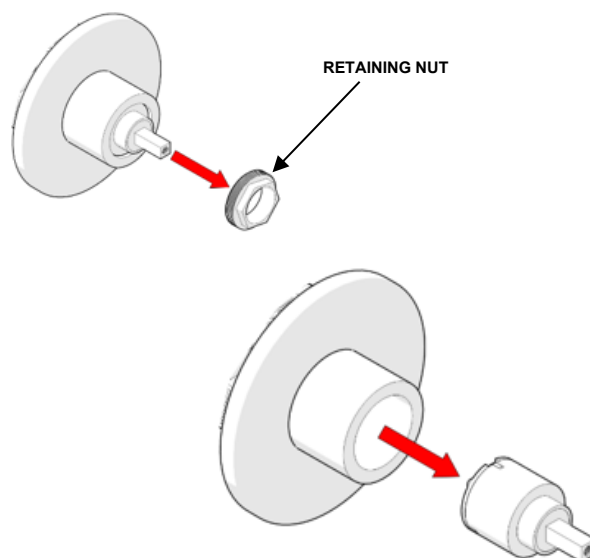


### 4. Check for correct operation

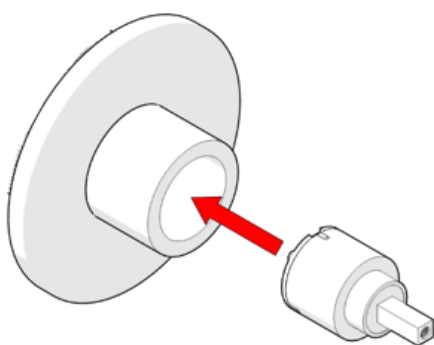
- Connect water supply and check for correct operation

**REPLACE CARTRIDGE****1. Remove indicator plug, handle and cap**

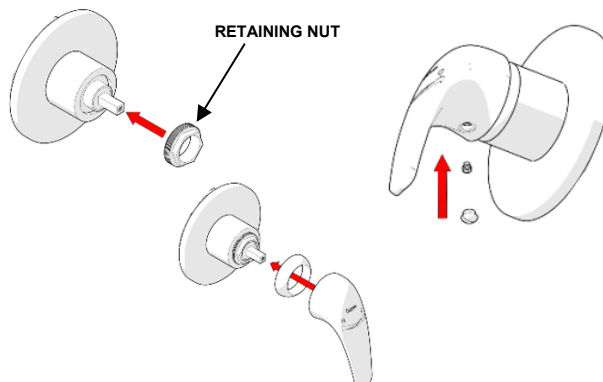
- Turn off hot and cold water supplies at isolating valves.
- Remove indicator plug.
- Using 2.5mm Allen key, loosen screw and remove handle.
- Remove cap taking care not to damage the decorative finish.

**2. Remove old cartridge**

- Unscrew retaining nut and lift out old cartridge.
- Clean internal mixer body before installing new cartridge.

**3. Insert new cartridge**

- Fit new cartridge into mixer body, taking care that two lugs on base of cartridge fit into mating holes in mixer body

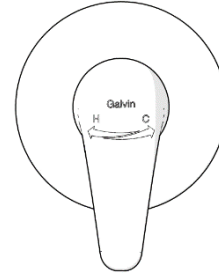
**4. Reassemble**

- Reassemble by reversing steps 1-2.

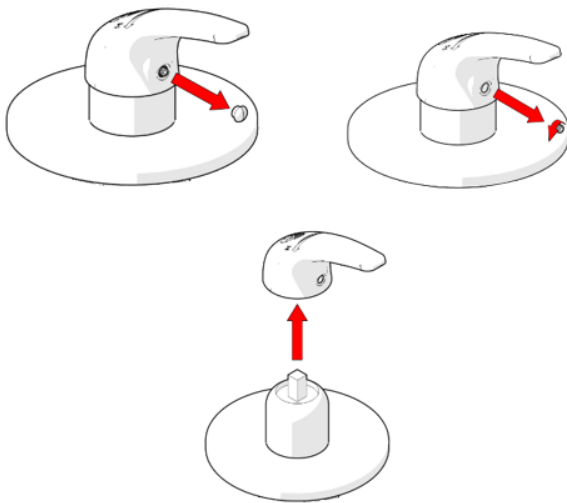
**⚠ Note:** Retaining nut must be tightened to a torque of 10-11 Nm

### 5. Connect water and check for correct operation

- Turn on isolating stop valves and check operation.

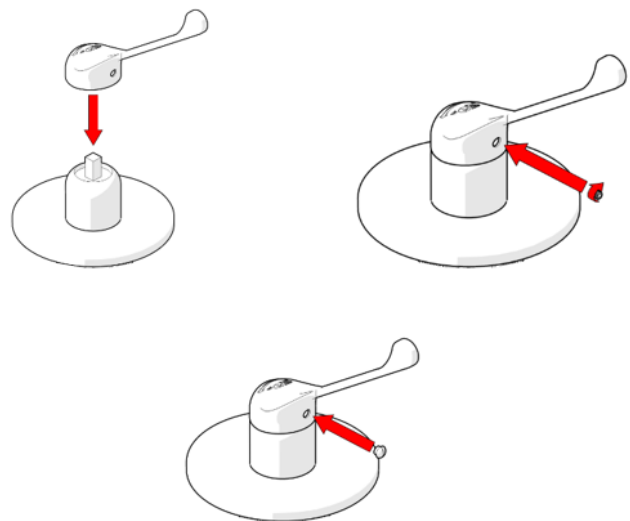


## REPLACE HANDLE



### 1. Remove the handle

- Remove indicator button.
- Using the Allen key provided, loosen the screw as shown.
- Remove the existing handle as shown.



### 2. Fit the new handle

- Remove indicator button from the new handle. Using allen key provide, loosen screw as shown in step 1.
- Fit the new handle onto the mixer body. Tighten the screw and install the indicator plug.

### 3. Testing

- Once fitted turn on water and check for leaks and correct operation



**TROUBLESHOOTING**

PROBLEM	CAUSE	RECTIFICATION
Tap is leaking	Cartridge damaged	Remove and inspect the cartridge, remove debris and/or replace if damaged
	Tap incorrectly installed	Follow the installation steps above when fitting the tap.
Tap has inconsistent flow	Blocked flow regulator	Follow the instructions above to remove flow regulator from the body and check for debris. Install an inline strainer to stop further blockages.
Tap moves on basin	Insufficiently tightened	Follow the steps above in relation to tightening the installation.
Water temperature is opposite to the handle markings	Inlet hoses connected incorrectly	Connect the inlet hoses to the correct inlets as shown above.

**WARRANTY**

Galvin Engineering products are covered under our Manufacturer's Warranty. Galvin Engineering products must be installed in accordance with the installation instructions and in accordance with AS 3500 and NCC Volume Three, relevant Australian Standards and local authorities applicable to product being installed. Water and electrical supply conditions must also comply to the applicable national and/or state standards, failing to comply with these provisions may void the product warranty and affect performance of the product.

Please visit [www.galvinengineering.com.au](http://www.galvinengineering.com.au) to view the full warranty, our Installation Compliance and Maintenance & Cleaning information as well as any other additional information.

Within Australia: 1300 514 074 Outside Australia: P: +61 (0)8 9338 2344

F: +61 (0)8 9338 2340

sales@galvinengineering.com.au

[www.galvinengineering.com.au](http://www.galvinengineering.com.au)

ABN: 78 008 719 382

PERTH | SYDNEY | MELBOURNE | BRISBANE | ADELAIDE

